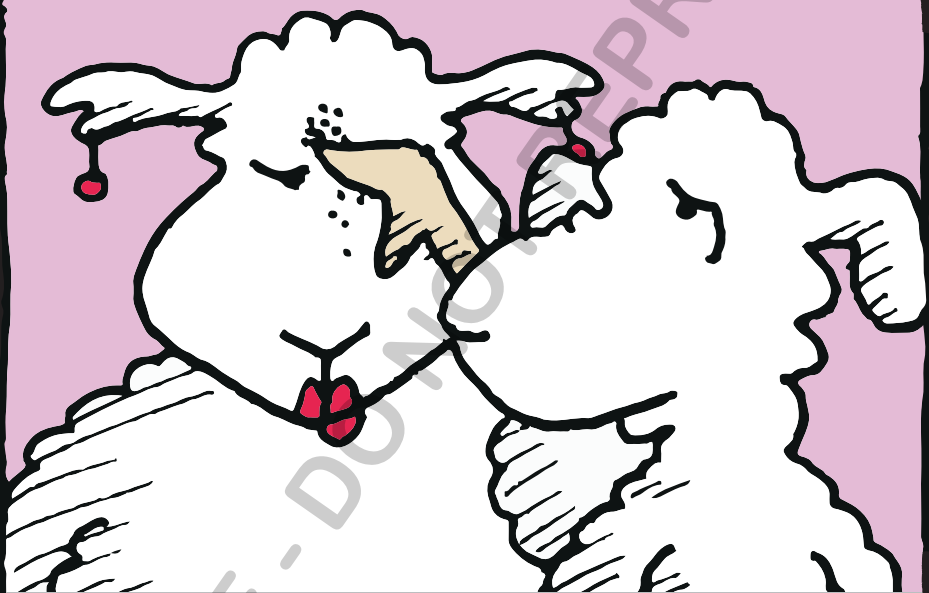


# FEELING SHEEPISH?



A LENTEN EXPERIENCE

with the

**FLOCK**

BY JEAN DENTON

Published by The Pastoral Center. (844) 727-8672, [www.pastoral.center](http://www.pastoral.center)

Copyright © 2017, 2018 Jean Denton. All rights reserved. No part of this publication may be reproduced or transmitted in any form or by any means, electronic, digital, or mechanical, including photocopying and recording, or by any information storage or retrieval system, including the Internet, without permission from the publisher. Permission is hereby given to use short excerpts with proper citation in reviews and marketing copy, class handouts, and scholarly papers. A reproduction license is available for purchase by parishes and schools.



The mark of  
responsible  
forestry  
FSC-C014722



Ancient  
Forest  
Friendly™

Printed in the United States of America  
on 100% post-consumer fiber. This  
paper is FSC certified, processed  
chlorine free, and ancient forest friendly.

## SUNDAY BEFORE ASH WEDNESDAY



### SHEEPISH QUESTION

What attitudes and habits have I developed lately that make me uncomfortable before God?

## MONDAY BEFORE ASH WEDNESDAY



### SHEEPISH QUESTION

As Lent begins, what are some reminders of how I've fallen short as a follower of Christ?

## TUESDAY BEFORE ASH WEDNESDAY



### SHEEPISH QUESTION

Are there some things I need to get out of my system before Lent — that I really shouldn't go back to after the penitential season is over?

## ASH WEDNESDAY



### SHEEPISH QUESTION

How does Jesus' Spirit make my life more than its earthly origins?

## THURSDAY AFTER ASH WEDNESDAY



### SHEEPISH QUESTION

Okay, so after the first day, how's the repenting going?

## FRIDAY AFTER ASH WEDNESDAY



### SHEEPISH QUESTION

In what positive ways might my Lenten practices affect my normal daily routine?



## SATURDAY AFTER ASH WEDNESDAY



### SHEEPISH QUESTION

What is likely to distract me from concentrating on my relationship with God throughout the coming weeks of Lent?

## FIRST SUNDAY OF LENT



### SHEEPISH QUESTION

But seriously, about temptation: How am I like Adam or Eve?

## MONDAY, FIRST WEEK OF LENT



### SHEEPISH QUESTION

What are my biggest worries and how can my reliance on God help relieve them?

## TUESDAY, FIRST WEEK OF LENT



### SHEEPISH QUESTION

Considering the temptations I commonly face, what's stopping me from wanting to change my ways?

## WEDNESDAY, FIRST WEEK OF LENT



### SHEEPISH QUESTION

Admitting my sinfulness before my loving God, how do I say I'm sorry?

## THURSDAY, FIRST WEEK OF LENT

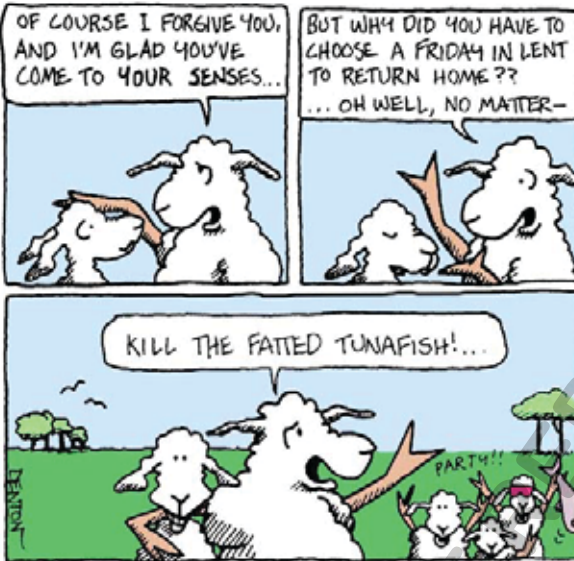


### SHEEPISH QUESTION

Am I missing God's presence in some areas of my life?



## FRIDAY, FIRST WEEK OF LENT



### SHEEPISH QUESTION

Recalling the story of the prodigal son, how have I experienced God's unconditional love?

## SATURDAY, FIRST WEEK OF LENT



### SHEEPISH QUESTION

What specific actions would draw me closer to God this week?

## SECOND SUNDAY OF LENT



### SHEEPISH QUESTION

What are some recent experiences of God's love for me that I can hold onto when times get rough?

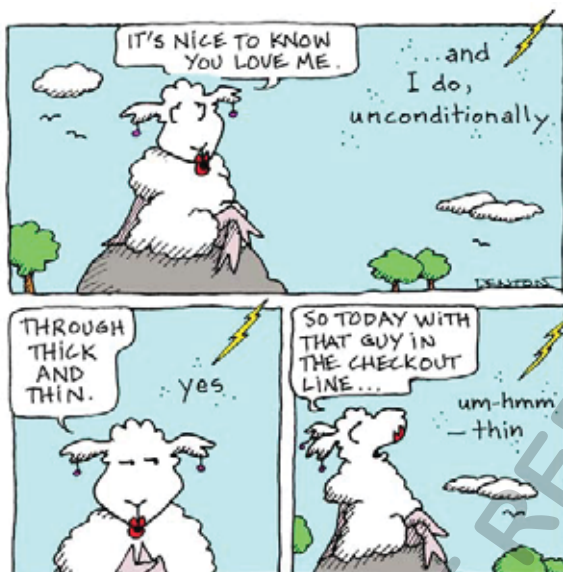
## MONDAY, SECOND WEEK OF LENT



### SHEEPISH QUESTION

How fast do I usually pray? Do I need to change how I pray? Why (not)?

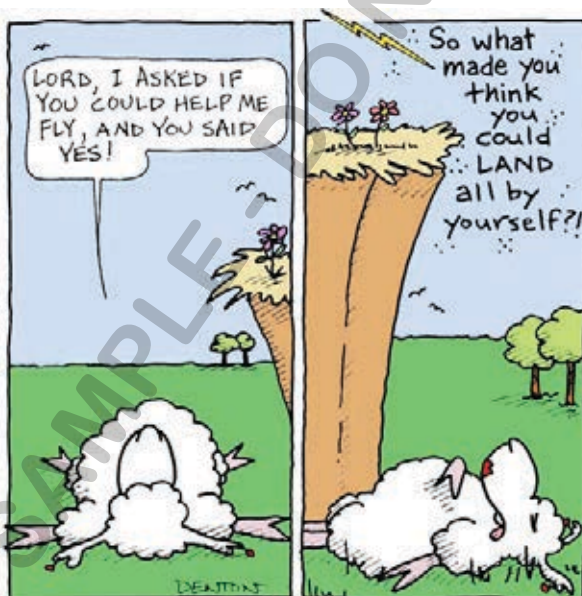
## TUESDAY, SECOND WEEK OF LENT



### SHEEPISH QUESTION

In the last few days, how have I been less faithful to Jesus than he's been to me?

## WEDNESDAY, SECOND WEEK OF LENT



### SHEEPISH QUESTION

For what do I need to ask God's assistance today?



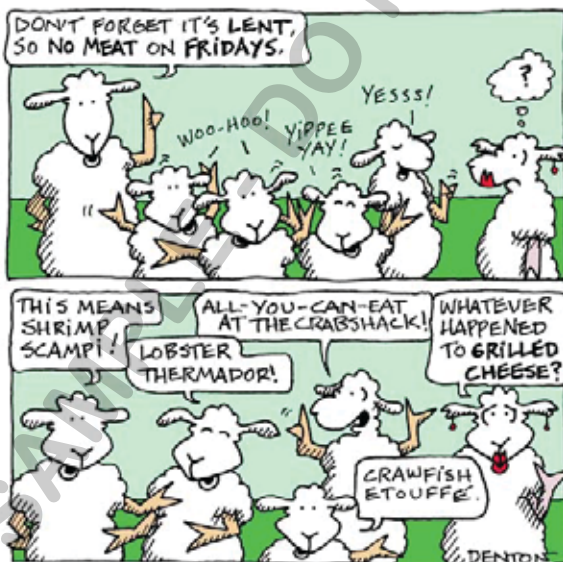
## THURSDAY, SECOND WEEK OF LENT



### SHEEPISH QUESTION

What am I doing for Jesus this Lent that God alone knows about?

## FRIDAY, SECOND WEEK OF LENT



### SHEEPISH QUESTION

What small sacrifices can I make for God and others? How about larger sacrifices?



## SATURDAY, SECOND WEEK OF LENT

---



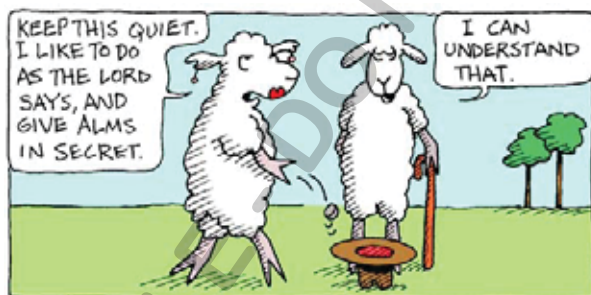
### SHEEPISH QUESTION

---

What am I afraid of?  
In confessing my sins,  
what is it that I need  
to reconcile with God?

## THIRD SUNDAY OF LENT

---



### SHEEPISH QUESTION

---

How many  
"alms" am I  
actually giving  
this week?



## MONDAY, THIRD WEEK OF LENT



### SHEEPISH QUESTION

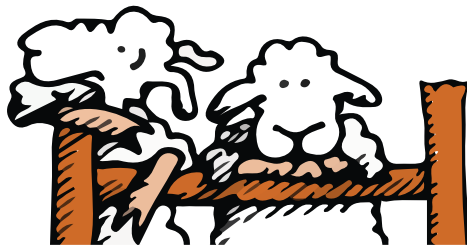
To whom can I bring Christ's love today through my own presence and actions?

## TUESDAY, THIRD WEEK OF LENT



### SHEEPISH QUESTION

What form of daily sustenance do I seek from God? How does it strengthen me?



# FEELING SHEEPISH?

## A LENTEN EXPERIENCE

with the **FLOCK**

*Experience this Lent through the antics and insights of The Flock. Who knew sheep could be so helpful with our faith? Jesus did! It's no mistake that our Lord and Good Shepherd regularly referenced these smelly creatures. Embrace your inner sheepishness with these daily reflections as we approach the Cross and Resurrection this Lenten season!*



Jean Denton is a cartoonist, illustrator and journalist. Her "Flock" cartoon feature has been running in the North Texas Catholic newspaper since 1997. It's also been in a few other Catholic papers, magazines, and resources. Besides drawing The Flock, Jean has been a Catholic newspaper reporter, columnist, and illustrator for more than 25 years. A veteran parish catechist, former youth minister, wife, and mother of three adult children, she holds a certificate in Christian spirituality from Loyola University of New Orleans.

Also from Jean and The Pastoral Center:

**The Sunday Flock** - Cartoons and questions for each Sunday in the liturgical year, for use in parish bulletins, social media, or handouts.

**Advent Waiting with the Flock** - Cartoons, scripture quotations, and reflection questions for every day in Advent.



**The Pastoral Center**

[www.pastoral.center](http://www.pastoral.center)